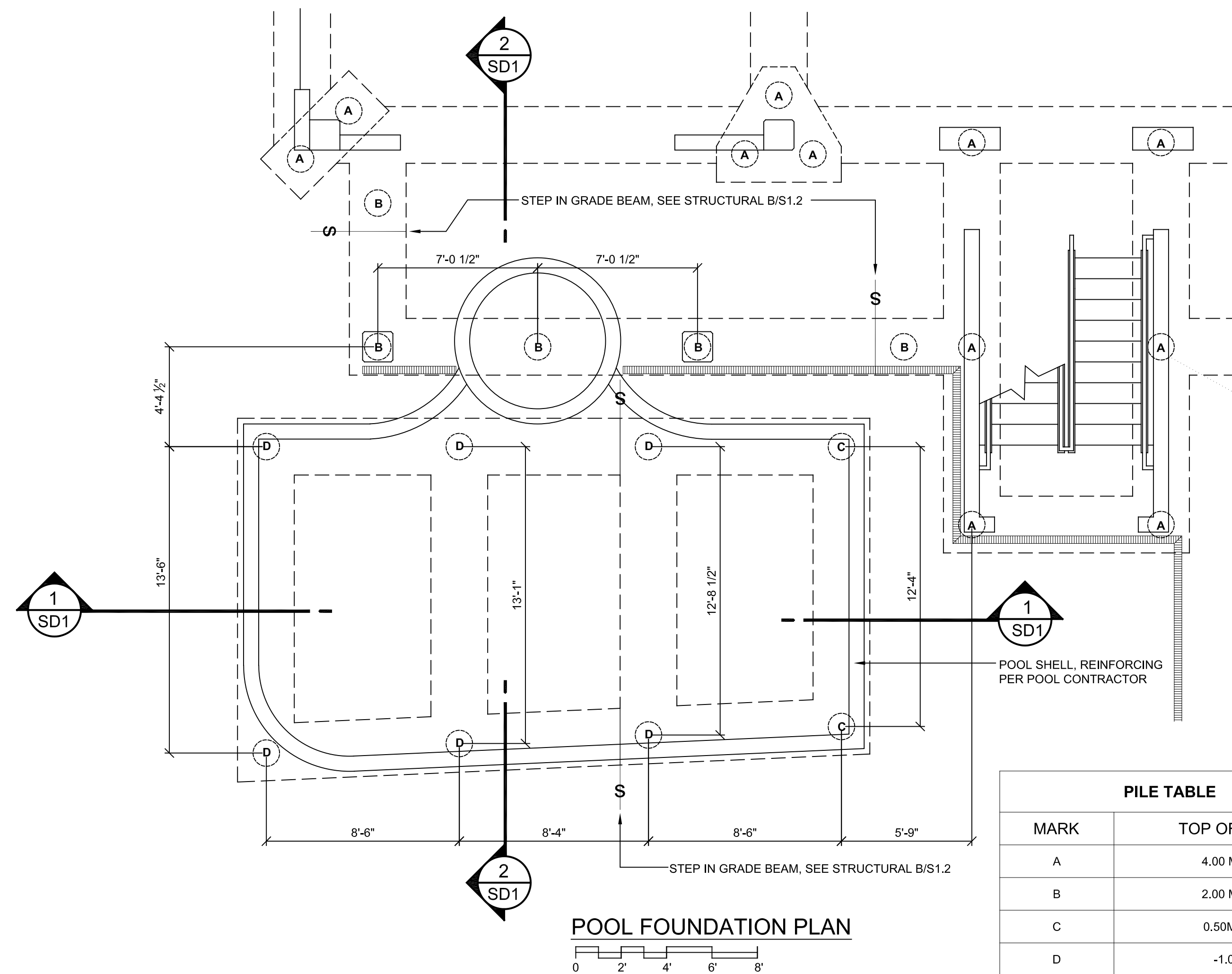
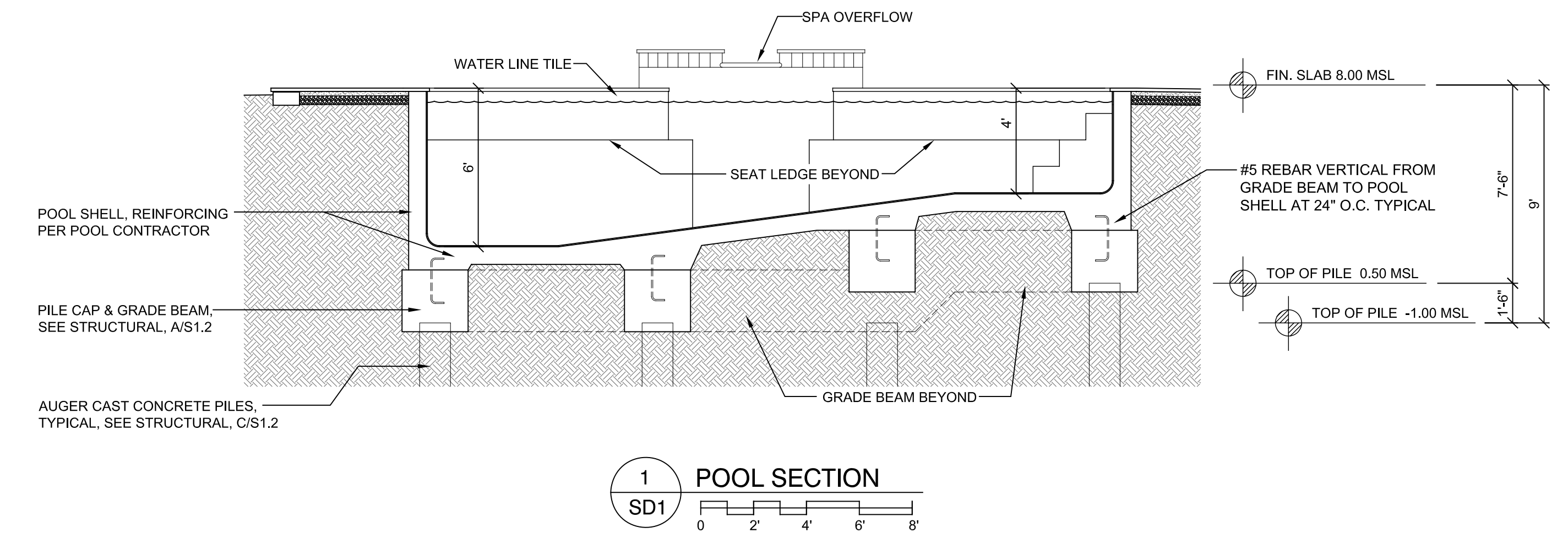


POOL PLAN
0 2 4 6 8

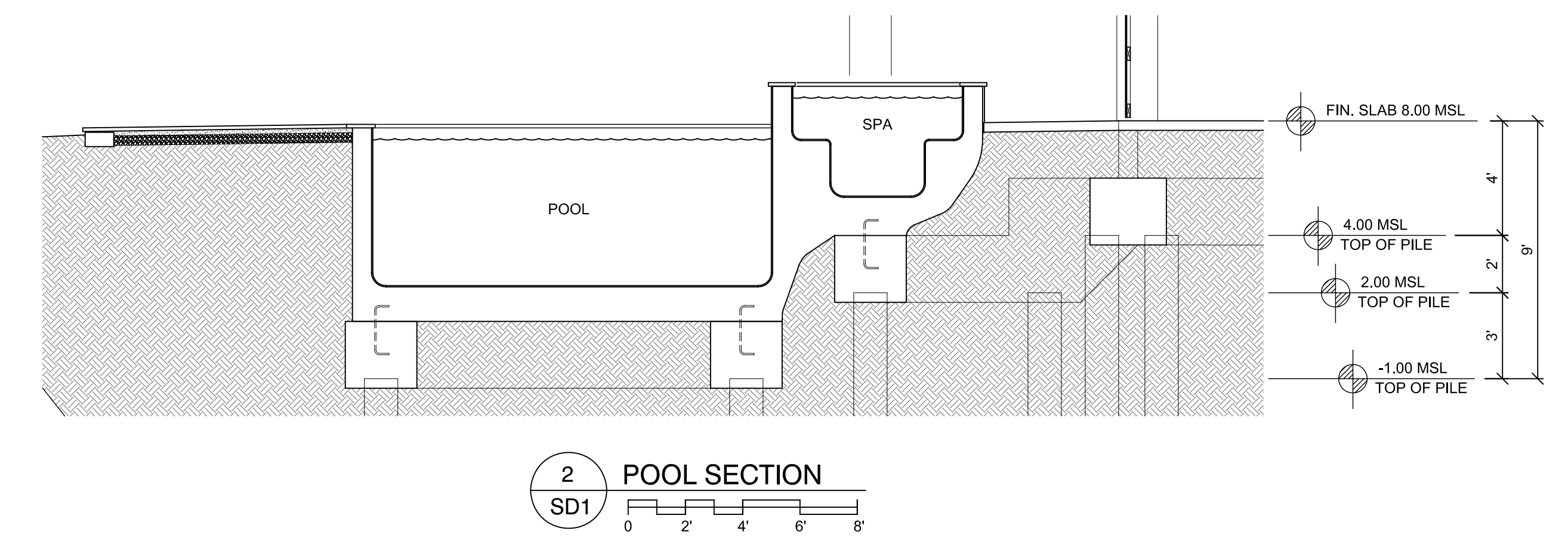


POOL FOUNDATION PLAN
0 2 4 6 8

PILE TABLE	
MARK	TOP OF PILE
A	4.00 MSL
B	2.00 MSL
C	0.50MSL
D	-1.00

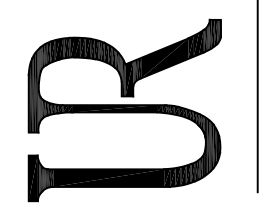


1 POOL SECTION
0 2 4 6 8



2 POOL SECTION
0 2 4 6 8

USSERY/RULE ARCHITECTS P.C.
1804-A FEDERICA ROAD
ST. SIMONS ISLAND, GEORGIA 31522
www.urarch.com
PH. 912-638-6688

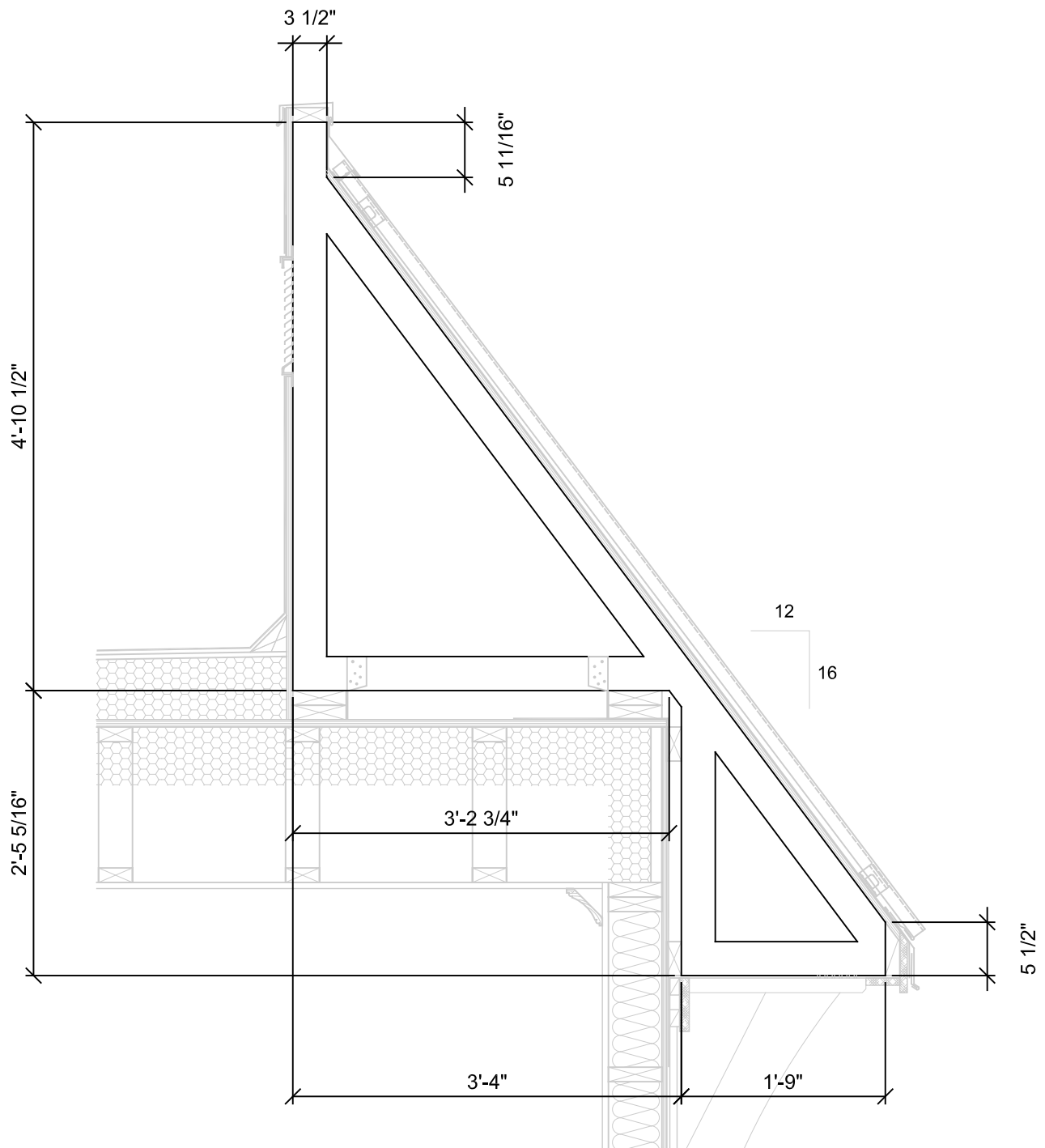


Architecture · Land Planning · Interior Design

VIEWPOINT CONDOMINIUM
LOT 6 & 7, BLOCK B, ARNOLD SUBDIVISION
1124 POSTELL AVENUE
ST. SIMONS ISLAND, GA.

1515
4-3-18
4-5-18

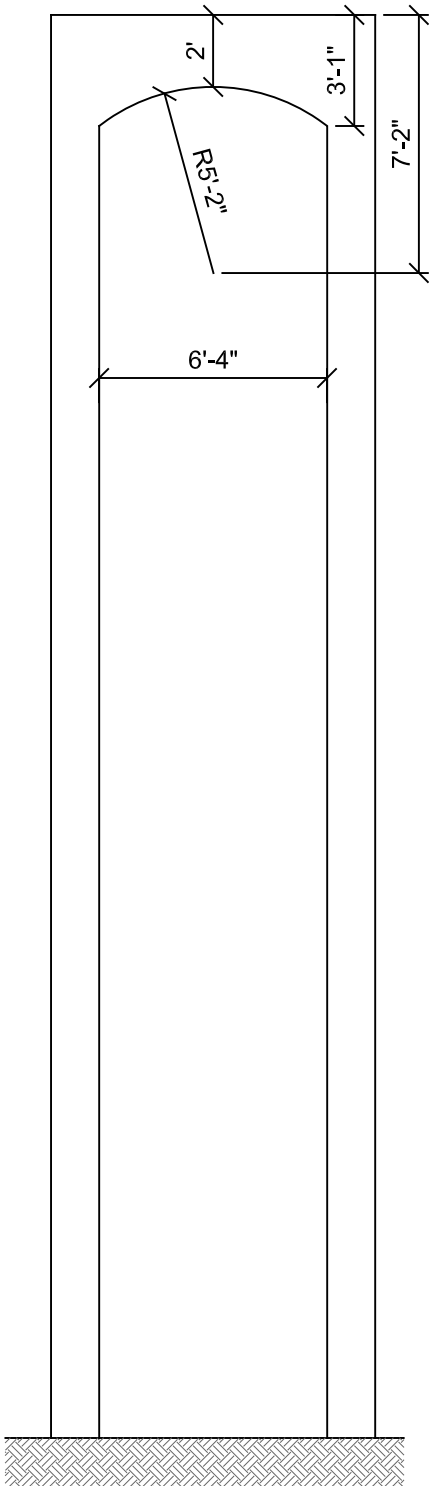
SD1



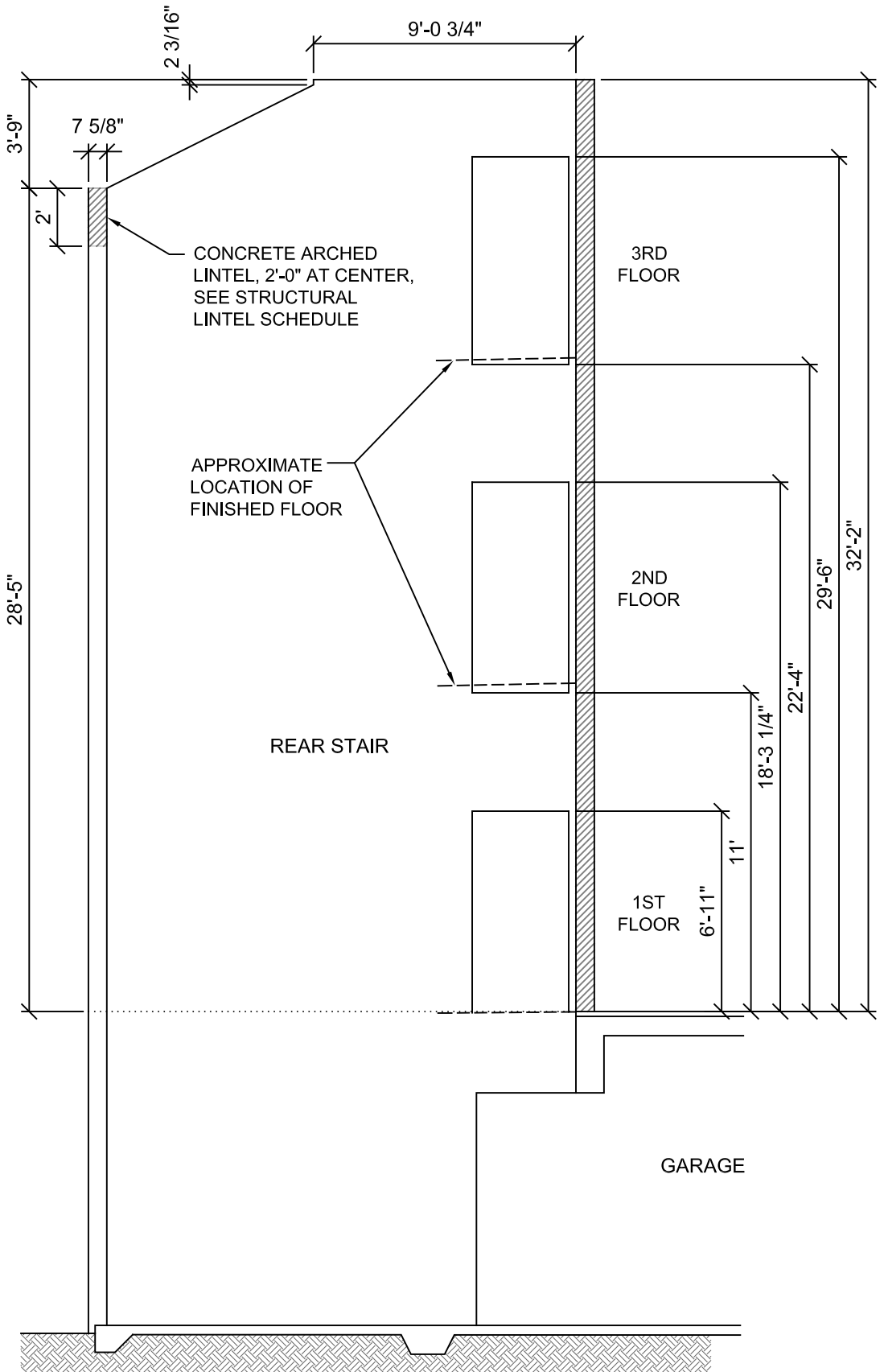
1
SD2

TYPICAL TRUSS PROFILE

SD3

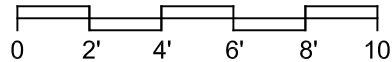


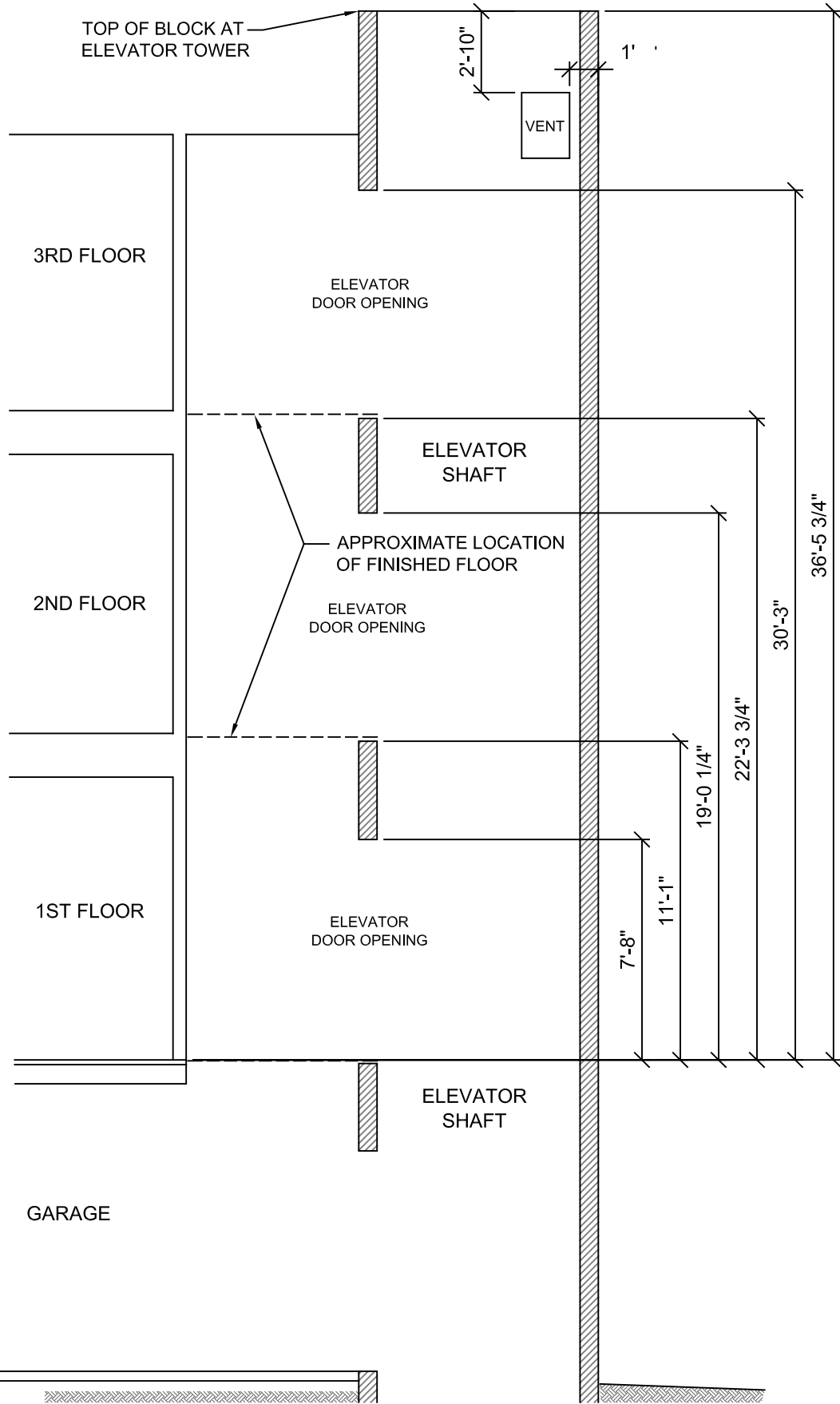
**REAR STAIR ARCH
CONCRETE LINTEL**



REAR STAIR BLOCK DIMENSIONS

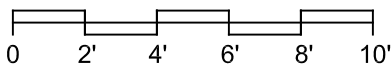
9
A13.0





ELEVATOR DOOR OPENING BLOCK DIMENSIONS

6
A10.0



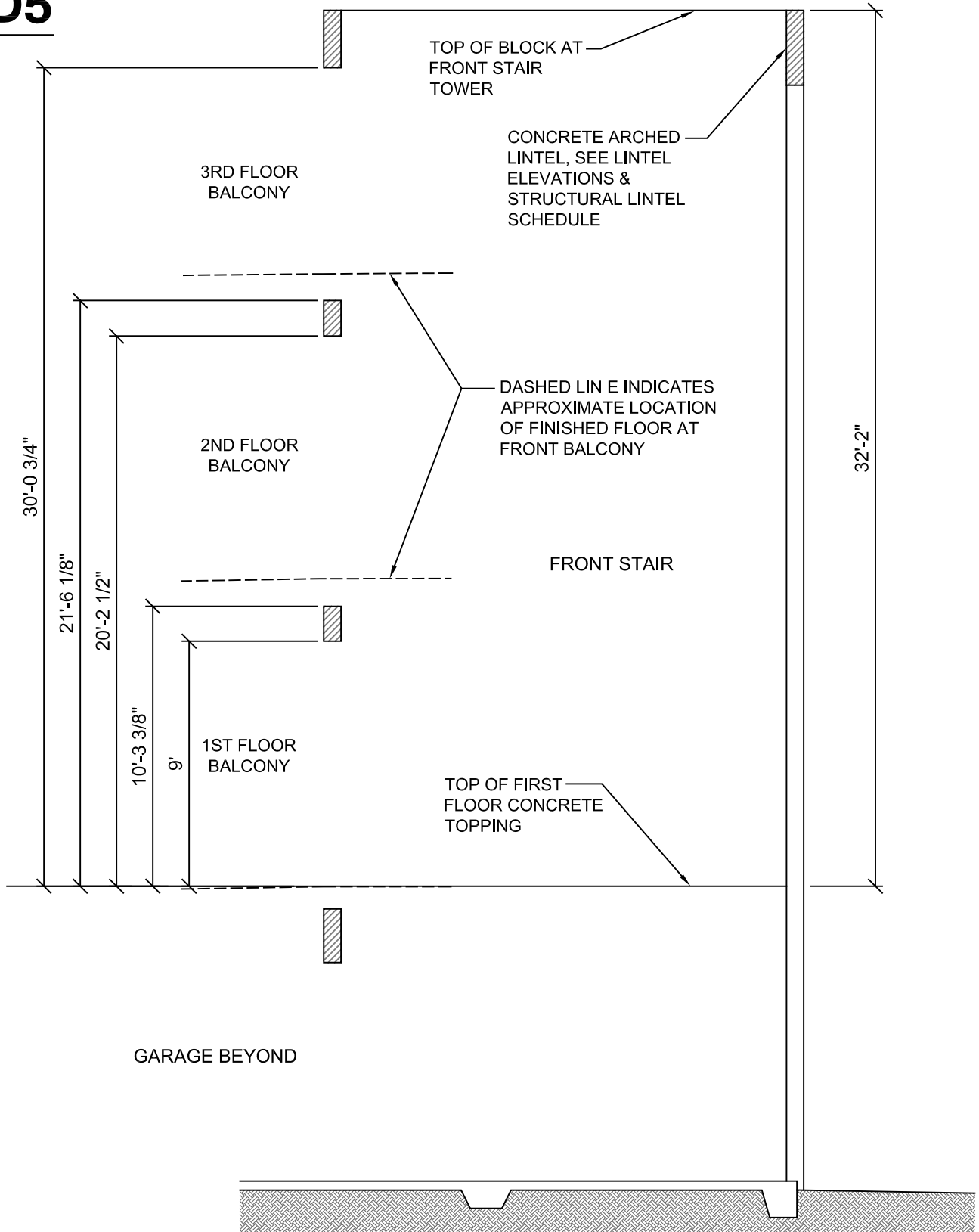
USSERY/RULE ARCHITECTS P.C.
1804-A FREDERICA ROAD
ST. SIMONS ISLAND, GEORGIA 31522
www.urarch.com

VIEWPOINT CONDOMINIUM

LOT 6 & 7, BLOCK B, ARNOLD SUBDIVISION
1124 POSTELL AVENUE
ST. SIMONS ISLAND, GA.

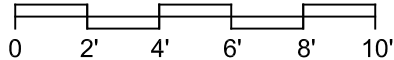
7-27-18

SD5



1
A11.0

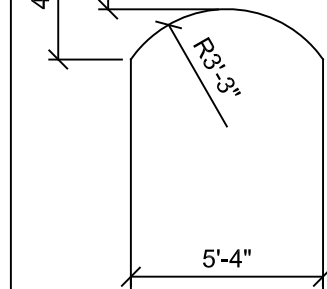
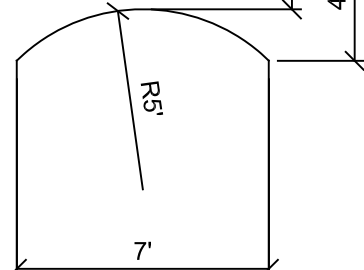
FRONT STAIR BLOCK DIMENSIONS



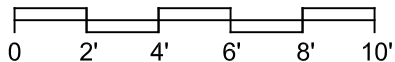
SD6

CONCRETE ARCHED LINTELS,
SEE STRUCTURAL LINTEL
SCHEDULE

TOP OF BLOCK
AT FRONT STAIR
TOWER



FRONT STAIR TOWER ARCH CONC. LINTELS



VIEWPOINT CONDOMINIUM

LOT 6 & 7, BLOCK B, ARNOLD SUBDIVISION

1124 POSTELL AVENUE

ST. SIMONS ISLAND, GA.

7-27-18